

FBLN5 Antibody



PACO06485

Product Information

Size:

50ug

Reactivity:

Human, Mouse, Rat

Source:

Rabbit

Isotype:

IgG

Applications:

ELISA, WB

Recommended dilutions:

ELISA:1:5000, WB:1:500-1:2000

Protein Background:

Gene ID:

FBLN5

Uniprot

Q9UBX5

Synonyms:

FBLN5; DANCE; Fibulin-5; FIBL-5; Developmental arteries and neural crest EGF-like protein; Dance; Urine p50 protein; UP50

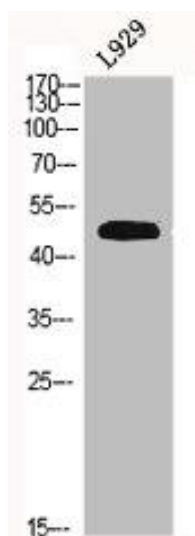
Immunogen:

Synthesized peptide derived from the Internal region of human Fibulin-5.

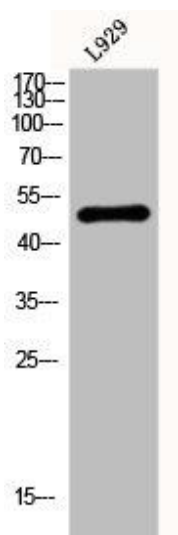
Storage:

Liquid in PBS containing 50% glycerol, 0.5% BSA and 0.02% sodium azide.

Product Images



Western Blot analysis of L929 cells using Fibulin-5 Polyclonal Antibody.



Western Blot analysis of L929 cells using Fibulin-5 Polyclonal Antibody.