

MAPK3/MAPK1 Antibody



PACO06476

Product Information

Size:

50ug

Reactivity:

Human, Mouse, Rat

Source:

Rabbit

Isotype:

IgG

Applications:

ELISA, WB, IF

Recommended dilutions:

ELISA:1:10000, WB:1:500-1:2000, IF:1:200-1:1000

Protein Background:

Gene ID:

MAPK3/MAPK1

Uniprot

P27361/P28482

Synonyms:

MAPK3; ERK1; PRKM3; Mitogen-activated protein kinase 3; MAP kinase 3; MAPK 3; ERT2; Extracellular signal-regulated kinase 1; ERK-1; Insulin-stimulated MAP2 kinase; MAP kinase isoform p44; p44-MAPK; Microtubule-associated protein 2 kinase; p

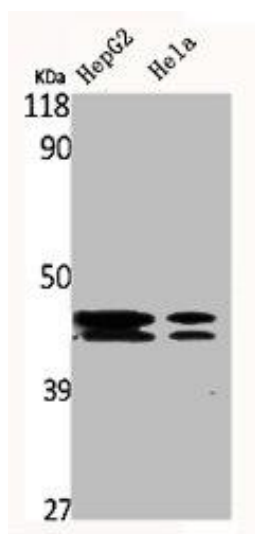
Immunogen:

Synthesized peptide derived from human ERK 1/2 around the non-phosphorylation site of T202.

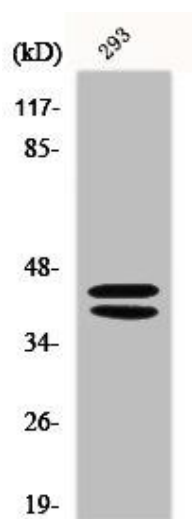
Storage:

Liquid in PBS containing 50% glycerol, 0.5% BSA and 0.02% sodium azide.

Product Images



Western Blot analysis of HepG2 HELA cells using ERK 1/2 Polyclonal Antibody.



Western Blot analysis of 293 cells using ERK 1/2 Polyclonal Antibody.