

EZH1 Antibody



PACO06461

Product Information

Size:

50ug

Reactivity:

Human, Mouse, Monkey

Source:

Rabbit

Isotype:

IgG

Applications:

ELISA, WB, IHC, IF

Recommended dilutions:

ELISA:1:40000, WB:1:500-1:2000,
IHC:1:100-1:300, IF:1:200-1:1000

Protein Background:**Gene ID:**

EZH1

Uniprot

Q92800

Synonyms:

EZH1; KIAA0388; Histone-lysine N-methyltransferase EZH1; ENX-2; Enhancer of zeste homolog 1

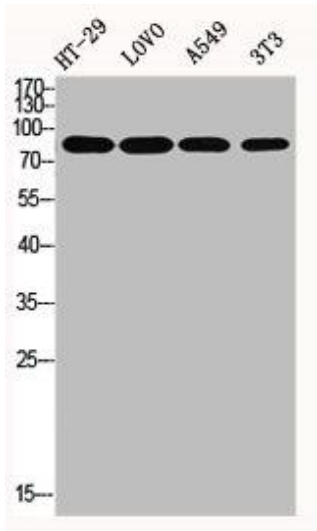
Immunogen:

Synthesized peptide derived from the Internal region of human ENX-2.

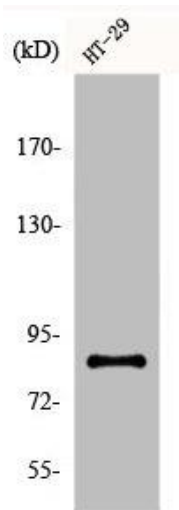
Storage:

Liquid in PBS containing 50% glycerol, 0.5% BSA and 0.02% sodium azide.

Product Images



Western Blot analysis of HT29 LOVO A549 NIH-3T3 cells using ENX-2 Polyclonal Antibody.



Western Blot analysis of COS7 cells using ENX-2 Polyclonal Antibody.