

EMR4P Antibody



PACO06458

Product Information

Size:

50ug

Reactivity:

Human, Monkey

Source:

Rabbit

Isotype:

IgG

Applications:

ELISA, WB, IF

Recommended dilutions:

ELISA:1:20000, WB:1:500-1:2000, IF:1:200-1:1000

Protein Background:**Gene ID:**

ADGRE4P

Uniprot

Q86SQ3

Synonyms:

EMR4P; EMR4; GPR127; PGR16; Putative EGF-like module-containing mucin-like hormone receptor-like 4; EGF-like module receptor 4; G-protein coupled receptor 127; G-protein coupled receptor PGR16

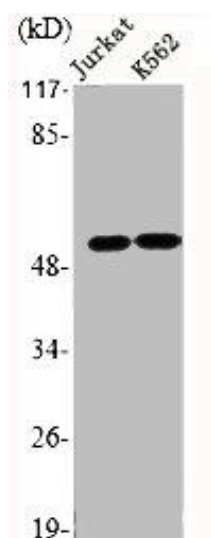
Immunogen:

Synthesized peptide derived from the Internal region of human EMR4.

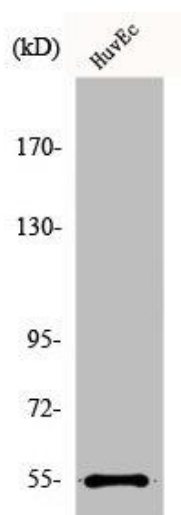
Storage:

Liquid in PBS containing 50% glycerol, 0.5% BSA and 0.02% sodium azide.

Product Images



Western Blot analysis of Jurkat K562 cells using EMR4 Polyclonal Antibody.



Western Blot analysis of COLO205 cells using EMR4 Polyclonal Antibody.