

# LPAR3 Antibody



PACO06448

---

## Product Information

**Size:**

50ug

**Reactivity:**

Human

**Source:**

Rabbit

**Isotype:**

IgG

**Applications:**

ELISA, WB, IHC, IF

**Recommended dilutions:**

ELISA:1:40000, WB:1:500-1:2000,  
IHC:1:100-1:300, IF:1:200-1:1000

**Protein Background:**

**Gene ID:**

LPAR3

**Uniprot**

Q9UBY5

**Synonyms:**

LPAR3; EDG7; LPA3; Lysophosphatidic acid, receptor 3; LPA receptor 3; LPA-3;  
Lysophosphatidic acid, receptor Edg-7

**Immunogen:**

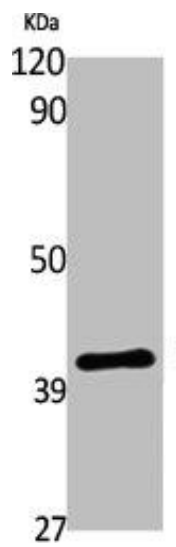
Synthesized peptide derived from the C-terminal region of human EDG-7.

**Storage:**

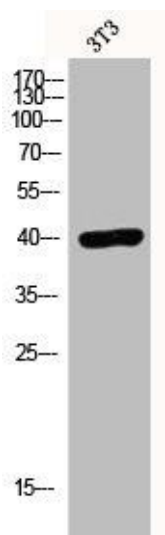
Liquid in PBS containing 50% glycerol, 0.5% BSA and 0.02% sodium azide.

## Product Images

---



Western Blot analysis of various cells using EDG-7 Polyclonal Antibody.



Western Blot analysis of 3T3 cells using EDG-7 Polyclonal Antibody.