

DYRK1A Antibody



PACO06441

Product Information

Size:

50ug

Reactivity:

Human, Mouse, Rat

Source:

Rabbit

Isotype:

IgG

Applications:

ELISA, WB, IHC, IF

Recommended dilutions:

ELISA:1:20000, WB:1:500-1:2000,
IHC:1:100-1:300, IF:1:200-1:1000

Protein Background:**Gene ID:**

DYRK1A

Uniprot

Q13627

Synonyms:

DYRK1A; DYRK; MNB; MNBH; Dual specificity tyrosine-phosphorylation-regulated kinase 1A; Dual specificity YAK1-related kinase; HP86; Protein kinase minibrain homolog; MNBH; hMNB

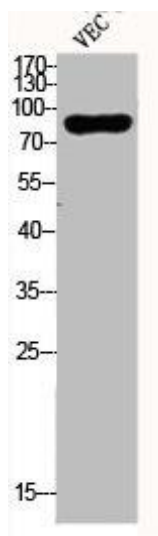
Immunogen:

Synthesized peptide derived from the N-terminal region of human Dyrk1A.

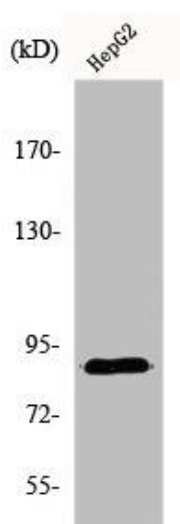
Storage:

Liquid in PBS containing 50% glycerol, 0.5% BSA and 0.02% sodium azide.

Product Images



Western Blot analysis of VEC cells using Dyrk1A Polyclonal Antibody.



Western Blot analysis of HepG2 cells using Dyrk1A Polyclonal Antibody.