

PACO06428

Product Information

Size:

50ug

Reactivity:

Human

Source:

Rabbit

Isotype:

IgG

Applications:

ELISA, WB

Recommended dilutions:

ELISA:1:40000, WB:1:500-1:2000

Protein Background:**Gene ID:**

DMPK

Uniprot

Q09013

Synonyms:

DMPK; DM1PK; MDPK; Myotonin-protein kinase; MT-PK; DM-kinase; DMK; DM1 protein kinase; DMPK; Myotonic dystrophy protein kinase

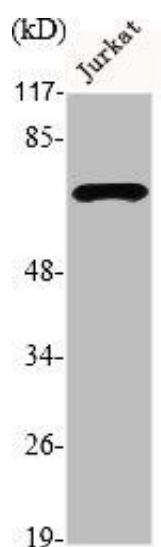
Immunogen:

Synthesized peptide derived from the N-terminal region of human DMPK.

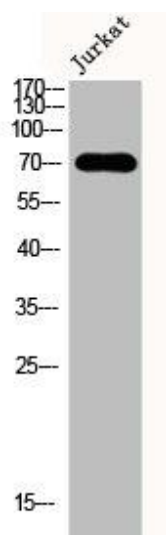
Storage:

Liquid in PBS containing 50% glycerol, 0.5% BSA and 0.02% sodium azide.

Product Images



Western Blot analysis of Jurkat cells using DMPK Polyclonal Antibody.



Western Blot analysis of Jurkat cells using DMPK Polyclonal Antibody.