

PACO06427

Product Information

Size:

50ug

Reactivity:

Human

Source:

Rabbit

Isotype:

IgG

Applications:

ELISA, WB

Recommended dilutions:

ELISA:1:20000, WB:1:500-1:2000

Protein Background:

Gene ID:

DHPS

Uniprot

P49366

Synonyms:

DHPS; DS; Deoxyhypusine synthase; DHS

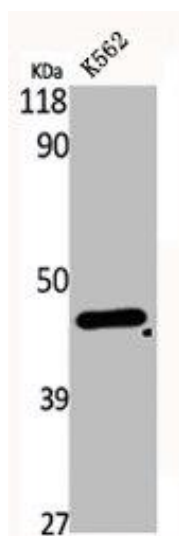
Immunogen:

Synthesized peptide derived from the Internal region of human DHS.

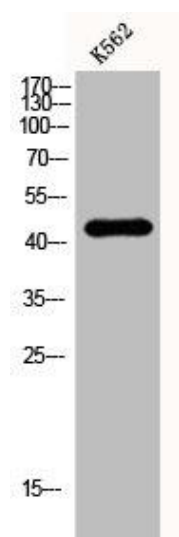
Storage:

Liquid in PBS containing 50% glycerol, 0.5% BSA and 0.02% sodium azide.

Product Images



Western Blot analysis of K562 cells using DHS Polyclonal Antibody.



Western Blot analysis of K562 cells using DHS Polyclonal Antibody.