

# DCLK3 Antibody



PACO06424

---

## Product Information

**Size:**

50ug

**Reactivity:**

Human

**Source:**

Rabbit

**Isotype:**

IgG

**Applications:**

ELISA, WB, IHC

**Recommended dilutions:**

ELISA:1:5000, WB:1:500-1:2000, IHC:1:100-1:300

**Protein Background:**

**Gene ID:**

DCLK3

**Uniprot**

Q9C098

**Synonyms:**

DCLK3; DCAMKL3; DCDC3C; KIAA1765; Serine/threonine-protein kinase DCLK3; Doublecortin domain-containing protein 3C; Doublecortin-like and CAM kinase-like 3; Doublecortin-like kinase 3

**Immunogen:**

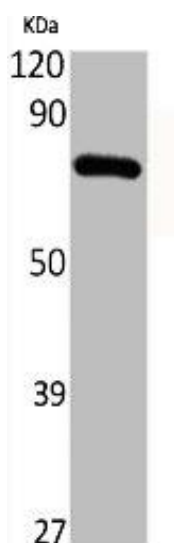
Synthesized peptide derived from the Internal region of human DCAMKL3.

**Storage:**

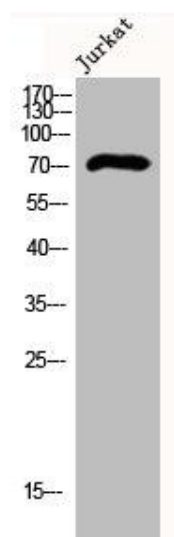
Liquid in PBS containing 50% glycerol, 0.5% BSA and 0.02% sodium azide.

## Product Images

---



Western Blot analysis of various cells using DCAMKL3 Polyclonal Antibody.



Western Blot analysis of Jurkat cells using DCAMKL3 Polyclonal Antibody.