

# PPP1R1B Antibody



PACO06421

---

## Product Information

**Size:**

50ug

**Reactivity:**

Human, Mouse, Rat

**Source:**

Rabbit

**Isotype:**

IgG

**Applications:**

ELISA, WB, IHC

**Recommended dilutions:**

ELISA:1:40000, WB:1:500-1:2000,  
IHC:1:100-1:300

**Protein Background:**

**Gene ID:**

PPP1R1B

**Uniprot**

Q9UD71

**Synonyms:**

PPP1R1B; DARPP32; Protein phosphatase 1 regulatory subunit 1B; DARPP-32;  
Dopamine- and cAMP-regulated neuronal phosphoprotein

**Immunogen:**

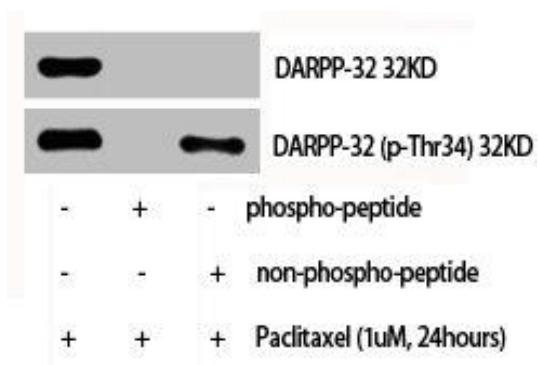
Synthesized peptide derived from human DARPP-32 around the non-phosphorylation site of T75.

**Storage:**

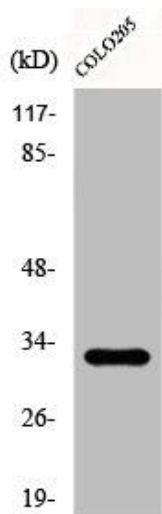
Liquid in PBS containing 50% glycerol, 0.5% BSA and 0.02% sodium azide.

## Product Images

---



Western Blot analysis of various cells using DARPP-32 Polyclonal Antibody.



Western Blot analysis of COLO205 cells using DARPP-32 Polyclonal Antibody.