

KRT5 Antibody



PACO06415

Product Information

Size:

50ug

Reactivity:

Human, Mouse, Rat

Source:

Rabbit

Isotype:

IgG

Applications:

ELISA, WB, IHC, IF

Recommended dilutions:

ELISA:1:10000, WB:1:500-1:2000,
IHC:1:100-1:300, IF:1:200-1:1000

Protein Background:

Gene ID:

KRT5

Uniprot

P13647

Synonyms:

KRT5; Keratin; type II cytoskeletal 5; 58 kDa cytokeratin; Cytokeratin-5; CK-5; Keratin-5; K5; Type-II keratin Kb5

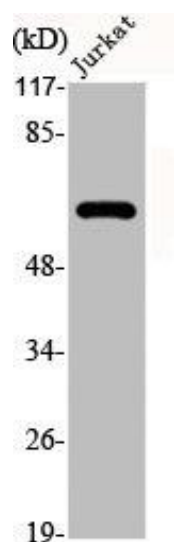
Immunogen:

Synthesized peptide derived from the C-terminal region of human Cytokeratin 5.

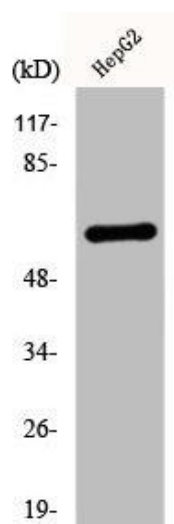
Storage:

Liquid in PBS containing 50% glycerol, 0.5% BSA and 0.02% sodium azide.

Product Images



Western Blot analysis of Jurkat cells using Cytokeratin 5 Polyclonal Antibody.



Western Blot analysis of HepG2 cells using Cytokeratin 5 Polyclonal Antibody.