

CYP39A1 Antibody



PACO06401

Product Information

Size:

50ug

Reactivity:

Human

Source:

Rabbit

Isotype:

IgG

Applications:

ELISA, WB, IHC

Recommended dilutions:

ELISA:1:40000, WB:1:500-1:2000,
IHC:1:100-1:300

Protein Background:

Gene ID:

CYP39A1

Uniprot

Q9NYL5

Synonyms:

CYP39A1; 24-hydroxycholesterol 7-alpha-hydroxylase; Cytochrome P450 39A1; hCYP39A1; Oxysterol 7-alpha-hydroxylase

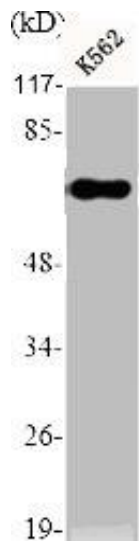
Immunogen:

Synthesized peptide derived from the Internal region of human CYP39A1.

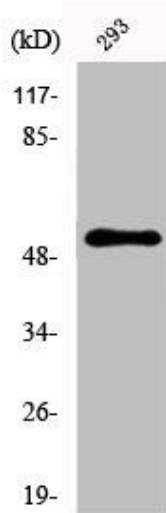
Storage:

Liquid in PBS containing 50% glycerol, 0.5% BSA and 0.02% sodium azide.

Product Images



Western Blot analysis of K562 cells using CYP39A1 Polyclonal Antibody.



Western Blot analysis of HeLa cells using CYP39A1 Polyclonal Antibody.