

# CYP2A7 Antibody



PACO06399

---

## Product Information

**Size:**

50ug

**Reactivity:**

Human

**Source:**

Rabbit

**Isotype:**

IgG

**Applications:**

ELISA, WB, IHC

**Recommended dilutions:**

ELISA:1:40000, WB:1:500-1:2000,  
IHC:1:100-1:300

**Protein Background:**

**Gene ID:**

CYP2A7

**Uniprot**

P20853

**Synonyms:**

CYP2A7; Cytochrome P450 2A7; CYP11A7; Cytochrome P450 IIA4

**Immunogen:**

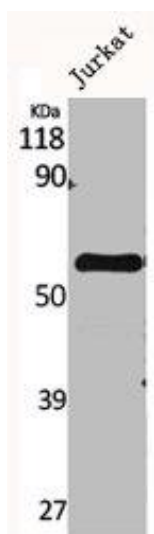
Synthesized peptide derived from the C-terminal region of human CYP2A7.

**Storage:**

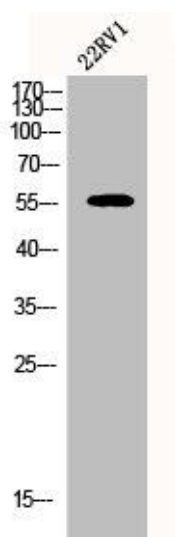
Liquid in PBS containing 50% glycerol, 0.5% BSA and 0.02% sodium azide.

## Product Images

---



Western Blot analysis of Jurkat cells using CYP2A7 Polyclonal Antibody.



Western Blot analysis of 22RV1 cells using CYP2A7 Polyclonal Antibody.