

CYP26A1 Antibody



PACO06398

Product Information

Size:

50ug

Reactivity:

Human, Mouse, Rat

Source:

Rabbit

Isotype:

IgG

Applications:

ELISA, WB, IF

Recommended dilutions:

ELISA:1:20000, WB:1:500-1:2000, IF:1:200-1:1000

Protein Background:

Gene ID:

CYP26A1

Uniprot

O43174

Synonyms:

CYP26A1; CYP26; P450RAI1; Cytochrome P450 26A1; Cytochrome P450 retinoic acid, inactivating 1; Cytochrome P450RAI; hP450RAI; Retinoic acid, 4-hydroxylase; Retinoic acid, metabolizing cytochrome

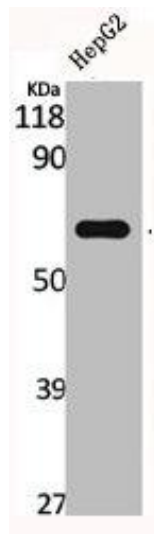
Immunogen:

Synthesized peptide derived from the Internal region of human CYP26A1.

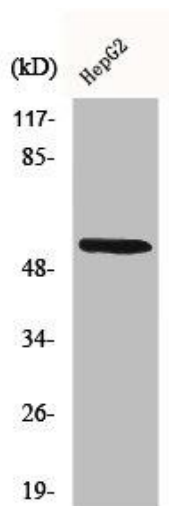
Storage:

Liquid in PBS containing 50% glycerol, 0.5% BSA and 0.02% sodium azide.

Product Images



Western Blot analysis of HepG2 cells using CYP26A1 Polyclonal Antibody.



Western Blot analysis of 293 cells using CYP26A1 Polyclonal Antibody.