

CCNA1 Antibody



PACO06390

Product Information

Size:

50ug

Reactivity:

Human, Mouse, Rat

Source:

Rabbit

Isotype:

IgG

Applications:

ELISA, WB, IHC

Recommended dilutions:

ELISA:1:40000, WB:1:500-1:2000,
IHC:1:100-1:300

Protein Background:

Gene ID:

CCNA1

Uniprot

P78396

Synonyms:

CCNA1; Cyclin-A1

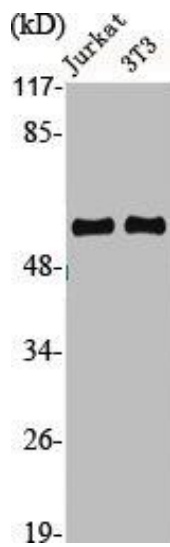
Immunogen:

Synthesized peptide derived from the C-terminal region of human Cyclin A1.

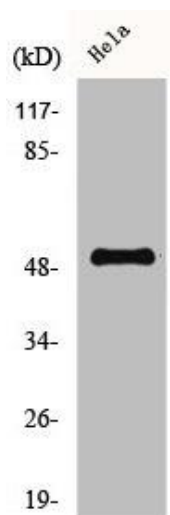
Storage:

Liquid in PBS containing 50% glycerol, 0.5% BSA and 0.02% sodium azide.

Product Images



Western Blot analysis of Jurkat NIH-3T3 cells using Cyclin A1 Polyclonal Antibody.



Western Blot analysis of HeLa cells using Cyclin A1 Polyclonal Antibody.