

CTDSP1 Antibody



PACO06384

Product Information

Size:

50ug

Reactivity:

Human, Mouse, Rat

Source:

Rabbit

Isotype:

IgG

Applications:

ELISA, WB, IHC

Recommended dilutions:

ELISA:1:40000, WB:1:500-1:2000,
IHC:1:100-1:300

Protein Background:**Gene ID:**

CTDSP1

Uniprot

Q9GZU7

Synonyms:

CTDSP1; NIF3; NLIIF; SCP1; Carboxy-terminal domain RNA polymerase II polypeptide A small phosphatase 1; Nuclear LIM interactor-interacting factor 3; NLI-IF; NLI-interacting factor 3; Small C-terminal domain phosphatase 1; SCP1; Small CTD ph

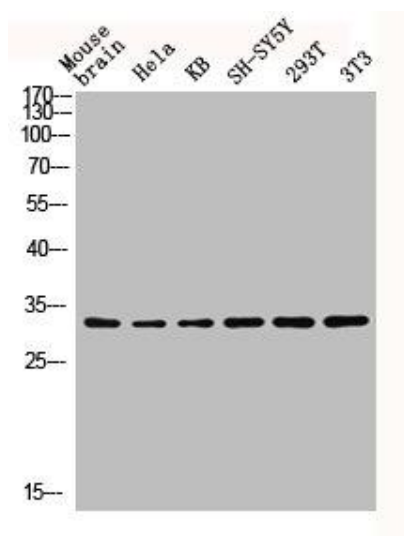
Immunogen:

Synthesized peptide derived from the N-terminal region of human CTDSP1.

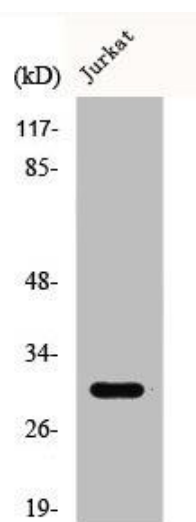
Storage:

Liquid in PBS containing 50% glycerol, 0.5% BSA and 0.02% sodium azide.

Product Images



Western blot analysis of mouse-brain HELA KB SH-SY5Y 293T 3T3 lysis using CTDSP1 antibody.



Western Blot analysis of HuvEc cells using CTDSP1 Polyclonal Antibody.