

PACO06382

Product Information

Size:

50ug

Reactivity:

Human, Mouse, Rat

Source:

Rabbit

Isotype:

IgG

Applications:

ELISA, WB, IHC

Recommended dilutions:

ELISA:1:20000, WB:1:500-1:2000,
IHC:1:100-1:300

Protein Background:**Gene ID:**

CSRNP2

Uniprot

Q9H175

Synonyms:

CSRNP2; C12orf22; FAM130A1; TAIP12; Cysteine/serine-rich nuclear protein 2; CSRNP-2; Protein FAM130A1; TGF-beta-induced apoptosis protein 12; TAIP-12

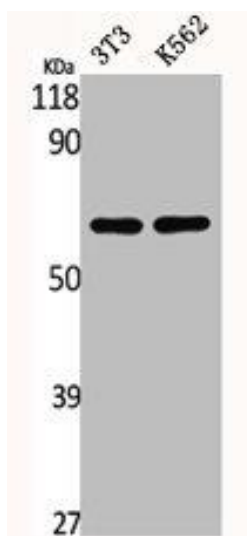
Immunogen:

Synthesized peptide derived from the Internal region of human CSRNP2.

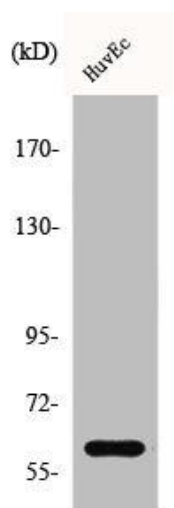
Storage:

Liquid in PBS containing 50% glycerol, 0.5% BSA and 0.02% sodium azide.

Product Images



Western Blot analysis of NIH-3T3 K562 cells using CSRNP2 Polyclonal Antibody.



Western Blot analysis of A549 cells using CSRNP2 Polyclonal Antibody.