

CRYAB Antibody



PACO06378

Product Information

Size:

50ug

Reactivity:

Human, Mouse, Rat

Source:

Rabbit

Isotype:

IgG

Applications:

ELISA, WB, IHC

Recommended dilutions:

ELISA:1:5000, WB:1:500-1:2000, IHC:1:100-1:300

Protein Background:**Gene ID:**

CRYAB

Uniprot

P02511

Synonyms:

CRYAB; CRYA2; alpha-crystallin B chain; alpha(B)-crystallin; Heat shock protein beta-5; HspB5; Renal carcinoma antigen NY-REN-27; Rosenthal fiber component

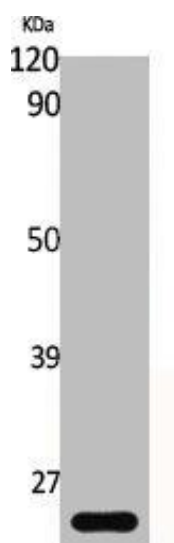
Immunogen:

Synthesized peptide derived from human Crystallin- α B around the non-phosphorylation site of S19.

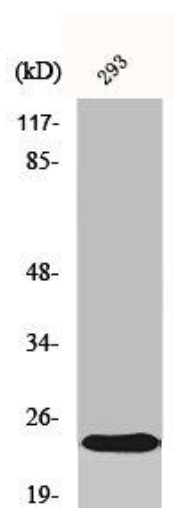
Storage:

Liquid in PBS containing 50% glycerol, 0.5% BSA and 0.02% sodium azide.

Product Images



Western Blot analysis of various cells using Crystallin- alpha B Polyclonal Antibody.



Western Blot analysis of 293 cells using Crystallin-alpha B Polyclonal Antibody.