

# CREB1 Antibody



PACO06375

---

## Product Information

**Size:**

50ug

**Reactivity:**

Human, Mouse, Rat

**Source:**

Rabbit

**Isotype:**

IgG

**Applications:**

ELISA, WB, IHC

**Recommended dilutions:**

ELISA:1:10000, WB:1:500-1:2000,  
IHC:1:100-1:300

**Protein Background:****Gene ID:**

CREB1

**Uniprot**

P16220

**Synonyms:**

CREB1; Cyclic AMP-responsive element-binding protein 1; CREB-1; cAMP-responsive element-binding protein 1

**Immunogen:**

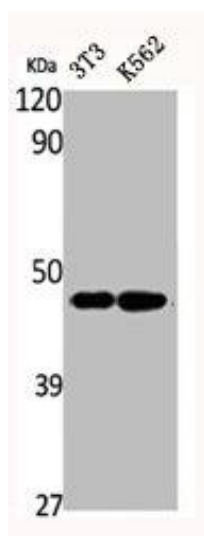
Synthesized peptide derived from human CREB-1 around the non-phosphorylation site of S129.

**Storage:**

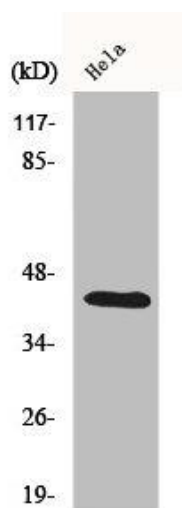
Liquid in PBS containing 50% glycerol, 0.5% BSA and 0.02% sodium azide.

## Product Images

---



Western Blot analysis of NIH-3T3 K562 cells using CREB-1 Polyclonal Antibody.



Western Blot analysis of HeLa cells using CREB-1 Polyclonal Antibody.