

PACO06373

Product Information

Size:

50ug

Reactivity:

Human

Source:

Rabbit

Isotype:

IgG

Applications:

ELISA, WB

Recommended dilutions:

ELISA:1:20000, WB:1:500-1:2000

Protein Background:

Gene ID:

CPN1

Uniprot

P15169

Synonyms:

CPN1; ACBP; Carboxypeptidase N catalytic chain; CPN; Anaphylatoxin inactivator; Arginine carboxypeptidase; Carboxypeptidase N polypeptide 1; Carboxypeptidase N small subunit; Kininase-1; Lysine carboxypeptidase; Plasma carboxypeptidase B; S

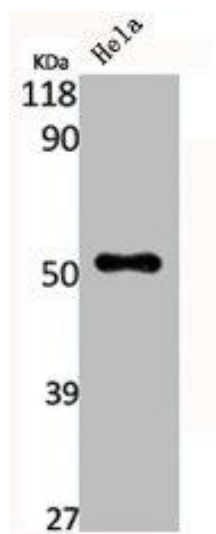
Immunogen:

Synthesized peptide derived from the C-terminal region of human CPN cat.

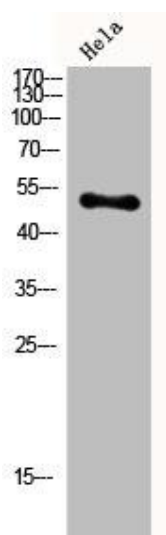
Storage:

Liquid in PBS containing 50% glycerol, 0.5% BSA and 0.02% sodium azide.

Product Images



Western Blot analysis of HELA cells using CPN cat Polyclonal Antibody.



Western Blot analysis of HeLa cells using CPN cat Polyclonal Antibody.