

COL2A1 Antibody



PACO06366

Product Information

Size:

50ug

Reactivity:

Human, Mouse, Rat

Source:

Rabbit

Isotype:

IgG

Applications:

ELISA, WB, IHC, IF

Recommended dilutions:

ELISA:1:20000, WB:1:500-1:2000,
IHC:1:100-1:300, IF:1:200-1:1000

Protein Background:**Gene ID:**

COL2A1

Uniprot

P02458

Synonyms:

COL2A1; Collagen alpha-1(II) chain; alpha-1 type II collagen

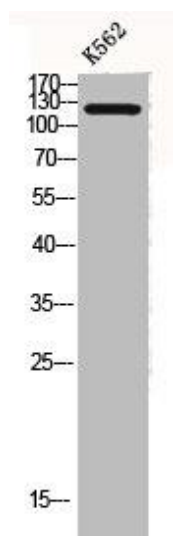
Immunogen:

Synthesized peptide derived from the N-terminal region of human COL2A1.

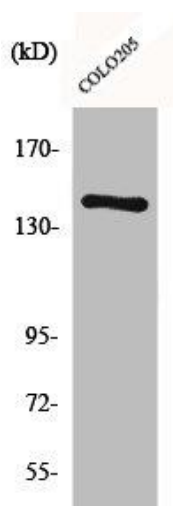
Storage:

Liquid in PBS containing 50% glycerol, 0.5% BSA and 0.02% sodium azide.

Product Images



Western Blot analysis of K562 cells using COL2A1 Polyclonal Antibody.



Western Blot analysis of COLO205 cells using COL2A1 Polyclonal Antibody.