

PACO06364

Product Information

Size:

50ug

Reactivity:

Human, Mouse, Rat

Source:

Rabbit

Isotype:

IgG

Applications:

ELISA, WB, IF

Recommended dilutions:

ELISA:1:40000, WB:1:500-1:2000, IF:1:200-1:1000

Protein Background:**Gene ID:**

CNGA2

Uniprot

Q16280

Synonyms:

CNGA2; CNCA; CNCA1; CNCG2; Cyclic nucleotide-gated olfactory channel; Cyclic nucleotide-gated cation channel 2; Cyclic nucleotide-gated channel alpha-2; CNG channel alpha-2; CNG-2; CNG2

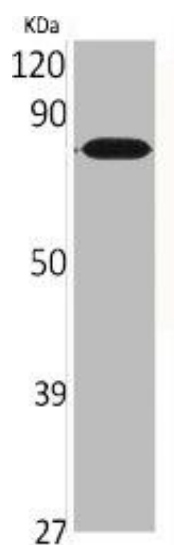
Immunogen:

Synthesized peptide derived from the Internal region of human CNG-2.

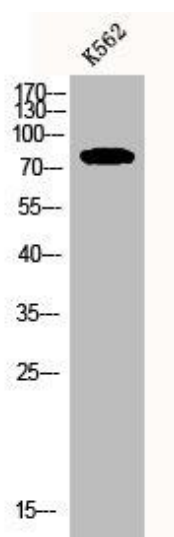
Storage:

Liquid in PBS containing 50% glycerol, 0.5% BSA and 0.02% sodium azide.

Product Images



Western Blot analysis of various cells using CNG-2 Polyclonal Antibody.



Western Blot analysis of K562 cells using CNG-2 Polyclonal Antibody.