

CNGB1 Antibody



PACO06363

Product Information

Size:

50ug

Reactivity:

Human, Mouse, Rat

Source:

Rabbit

Isotype:

IgG

Applications:

ELISA, WB

Recommended dilutions:

ELISA:1:10000, WB:1:500-1:2000

Protein Background:**Gene ID:**

CNGB1

Uniprot

Q14028

Synonyms:

CNGB1; CNCG2; CNCG3L; CNCG4; RCNC2; Cyclic nucleotide-gated cation channel beta-1; Cyclic nucleotide-gated cation channel 4; CNG channel 4; CNG-4; CNG4; Cyclic nucleotide-gated cation channel gamma; Cyclic nucleotide-gated cation channel mo

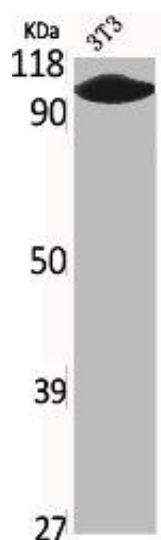
Immunogen:

Synthesized peptide derived from the Internal region of human CNG-1 β .

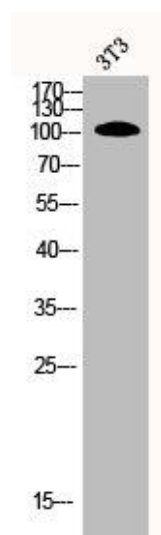
Storage:

Liquid in PBS containing 50% glycerol, 0.5% BSA and 0.02% sodium azide.

Product Images



Western Blot analysis of NIH-3T3 cells using CNG-1 beta Polyclonal Antibody.



Western Blot analysis of 3T3 cells using CNG-1 beta Polyclonal Antibody.