

CLIP2 Antibody



PACO06358

Product Information

Size:

50ug

Reactivity:

Human, Mouse, Rat

Source:

Rabbit

Isotype:

IgG

Applications:

ELISA, WB

Recommended dilutions:

ELISA:1:5000, WB:1:500-1:2000

Protein Background:

Gene ID:

CLIP2

Uniprot

Q9UDT6

Synonyms:

CLIP2; CYLN2; KIAA0291; WBSCR3; WBSCR4; WSCR4; CAP-Gly domain-containing linker protein 2; Cytoplasmic linker protein 115; CLIP-115; Cytoplasmic linker protein 2; Williams-Beuren syndrome chromosomal region 3 protein; Williams-Beuren syndro

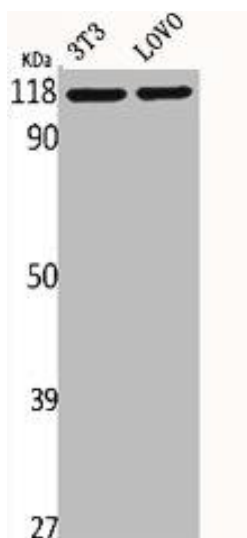
Immunogen:

Synthesized peptide derived from the C-terminal region of human CLIP-115.

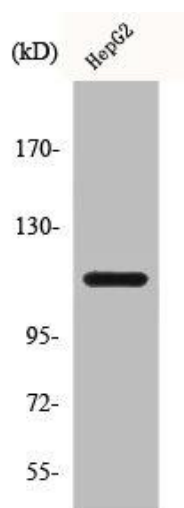
Storage:

Liquid in PBS containing 50% glycerol, 0.5% BSA and 0.02% sodium azide.

Product Images



Western Blot analysis of NIH-3T3 LOVO cells using CLIP-115 Polyclonal Antibody.



Western Blot analysis of A549 cells using CLIP-115 Polyclonal Antibody.