

# PRKG2 Antibody



PACO06347

---

## Product Information

**Size:**

50ug

**Reactivity:**

Human, Mouse, Rat

**Source:**

Rabbit

**Isotype:**

IgG

**Applications:**

ELISA, WB, IHC

**Recommended dilutions:**

ELISA:1:20000, WB:1:500-1:2000,  
IHC:1:100-1:300

**Protein Background:**

**Gene ID:**

PRKG2

**Uniprot**

Q13237

**Synonyms:**

PRKG2; PRKGR2; cGMP-dependent protein kinase 2; cGK 2; cGK2; cGMP-dependent protein kinase II; cGKII

**Immunogen:**

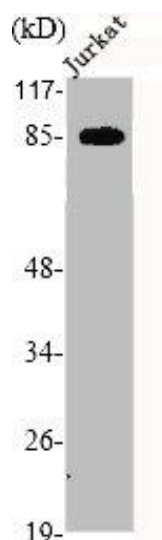
Synthesized peptide derived from the Internal region of human cGKII.

**Storage:**

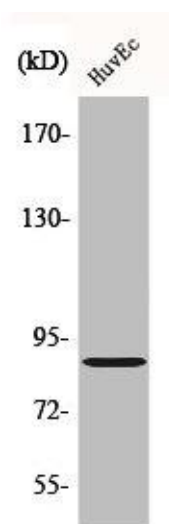
Liquid in PBS containing 50% glycerol, 0.5% BSA and 0.02% sodium azide.

## Product Images

---



Western Blot analysis of Jurkat cells using cGKII Polyclonal Antibody.



Western Blot analysis of HuvEc cells using cGKII Polyclonal Antibody.