

CDK10 Antibody



PACO06339

Product Information

Size:

50ug

Reactivity:

Human, Mouse, Rat

Source:

Rabbit

Isotype:

IgG

Applications:

ELISA, WB, IHC

Recommended dilutions:

ELISA:1:10000, WB:1:500-1:2000,
IHC:1:100-1:300

Protein Background:**Gene ID:**

CDK10

Uniprot

Q15131

Synonyms:

CDK10; Cyclin-dependent kinase 10; Cell division protein kinase 10; Serine/threonine-protein kinase PISSLRE

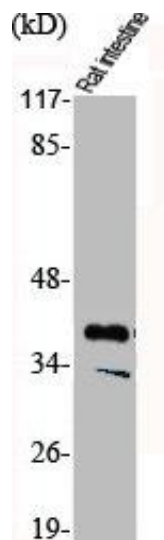
Immunogen:

Synthesized peptide derived from the Internal region of human Cdk10.

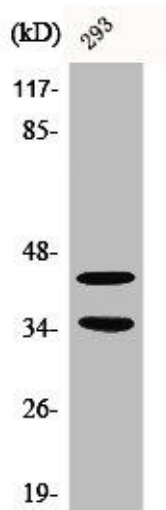
Storage:

Liquid in PBS containing 50% glycerol, 0.5% BSA and 0.02% sodium azide.

Product Images



Western Blot analysis of RAT-Intestine cells using Cdk10 Polyclonal Antibody.



Western Blot analysis of 293 cells using Cdk10 Polyclonal Antibody.