

CAV1 Antibody



PACO06325

Product Information

Size:

50ug

Reactivity:

Human, Mouse, Rat

Source:

Rabbit

Isotype:

IgG

Applications:

ELISA, WB, IF

Recommended dilutions:

ELISA:1:5000, WB:1:500-1:2000, IF:1:200-1:1000

Protein Background:

Gene ID:

CAV1

Uniprot

Q03135

Synonyms:

CAV1; CAV; Caveolin-1

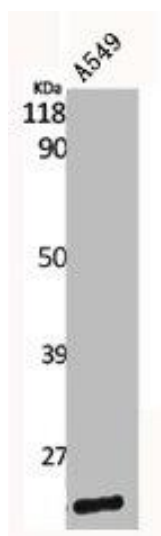
Immunogen:

Synthesized peptide derived from the C-terminal region of human Caveolin-1.

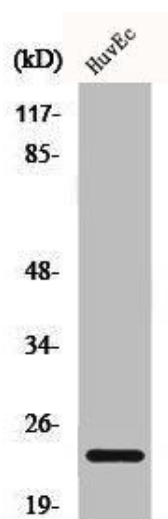
Storage:

Liquid in PBS containing 50% glycerol, 0.5% BSA and 0.02% sodium azide.

Product Images



Western Blot analysis of A549 cells using Caveolin-1 Polyclonal Antibody.



Western Blot analysis of HuvEc cells using Caveolin-1 Polyclonal Antibody.