

# JUP Antibody



PACO06324

---

## Product Information

**Size:**

50ug

**Reactivity:**

Human, Mouse, Rat

**Source:**

Rabbit

**Isotype:**

IgG

**Applications:**

ELISA, WB, IHC, IF

**Recommended dilutions:**

ELISA:1:20000, WB:1:500-1:2000,  
IHC:1:100-1:300, IF:1:200-1:1000

**Protein Background:**

**Gene ID:**

JUP

**Uniprot**

P14923

**Synonyms:**

JUP; CTNNG; DP3; Junction plakoglobin; Catenin gamma; Desmoplakin III;  
Desmoplakin-3

**Immunogen:**

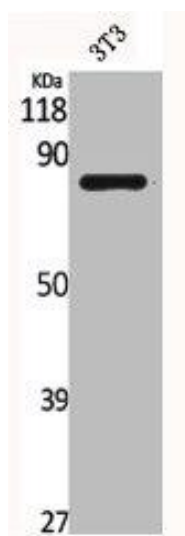
Synthesized peptide derived from the C-terminal region of human Catenin- &gamma; .

**Storage:**

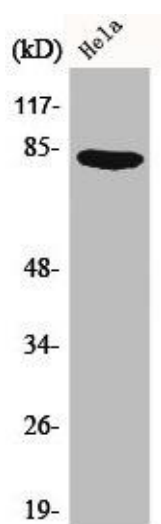
Liquid in PBS containing 50% glycerol, 0.5% BSA and 0.02% sodium azide.

## Product Images

---



Western Blot analysis of NIH-3T3 cells using Catenin- gamma Polyclonal Antibody.



Western Blot analysis of HeLa cells using Catenin- gamma Polyclonal Antibody.