

# CASP9 Antibody



PACO06317

---

## Product Information

**Size:**

50ug

**Reactivity:**

Human, Mouse, Rat

**Source:**

Rabbit

**Isotype:**

IgG

**Applications:**

ELISA, WB, IHC, IF

**Recommended dilutions:**

ELISA:1:5000, WB:1:500-1:2000, IHC:1:100-1:300, IF:1:200-1:1000

**Protein Background:****Gene ID:**

CASP9

**Uniprot**

P55211

**Synonyms:**

CASP9; MCH6; Caspase-9; CASP-9; Apoptotic protease Mch-6; Apoptotic protease-activating factor 3; APAF-3; ICE-like apoptotic protease 6; ICE-LAP6

**Immunogen:**

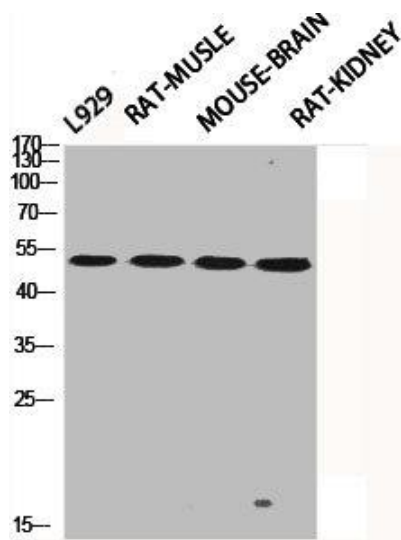
Synthesized peptide derived from human Caspase-9 around the non-phosphorylation site of T125.

**Storage:**

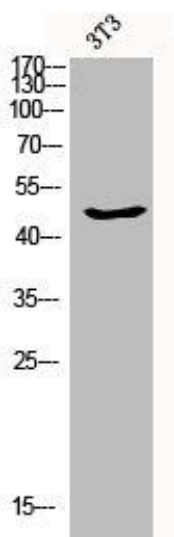
Liquid in PBS containing 50% glycerol, 0.5% BSA and 0.02% sodium azide.

## Product Images

---



Western Blot analysis of L929 rat-muscle mouse-brain rat-kidney cells using Caspase-9 Polyclonal Antibody.



Western Blot analysis of 3T3 cells using Caspase-9 Polyclonal Antibody.