

# CAPN12 Antibody



PACO06313

---

## Product Information

**Size:**

50ug

**Reactivity:**

Human

**Source:**

Rabbit

**Isotype:**

IgG

**Applications:**

ELISA, WB

**Recommended dilutions:**

ELISA:1:5000, WB:1:500-1:2000

**Protein Background:**

**Gene ID:**

CAPN12

**Uniprot**

Q6ZSI9

**Synonyms:**

CAPN12; Calpain-12; Calcium-activated neutral proteinase 12; CANP 12

**Immunogen:**

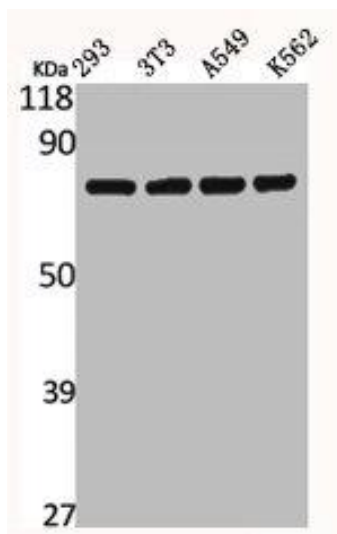
Synthesized peptide derived from the Internal region of human Calpain 12.

**Storage:**

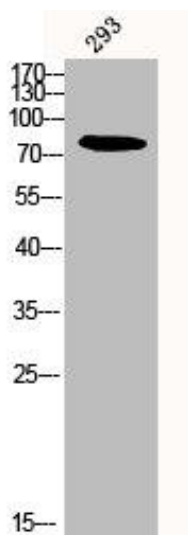
Liquid in PBS containing 50% glycerol, 0.5% BSA and 0.02% sodium azide.

## Product Images

---



Western Blot analysis of 293 NIH-3T3 A549 K562 cells using Calpain 12 Polyclonal Antibody.



Western Blot analysis of 293 cells using Calpain 12 Polyclonal Antibody.