

PACO06312

Product Information

Size:

50ug

Reactivity:

Human, Mouse, Rat

Source:

Rabbit

Isotype:

IgG

Applications:

ELISA, WB, IHC, IF

Recommended dilutions:

ELISA:1:5000, WB:1:500-1:2000, IHC:1:100-1:300, IF:1:200-1:1000

Protein Background:**Gene ID:**

CANX

Uniprot

P27824

Synonyms:

CANX; Calnexin; IP90; Major histocompatibility complex class I antigen-binding protein p88; p90

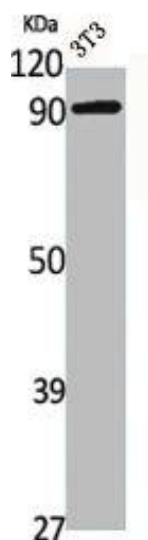
Immunogen:

Synthesized peptide derived from human Calnexin around the non-phosphorylation site of S583.

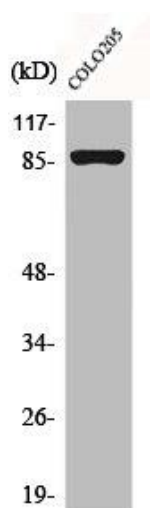
Storage:

Liquid in PBS containing 50% glycerol, 0.5% BSA and 0.02% sodium azide.

Product Images



Western Blot analysis of NIH-3T3 cells using Calnexin Polyclonal Antibody.



Western Blot analysis of COLO205 cells using Calnexin Polyclonal Antibody.