

BRCA1 Antibody



PACO06296

Product Information

Size:

50ug

Reactivity:

Human

Source:

Rabbit

Isotype:

IgG

Applications:

ELISA, WB, IHC

Recommended dilutions:

ELISA:1:20000, WB:1:500-1:2000,
IHC:1:100-1:300

Protein Background:

Gene ID:

BRCA1

Uniprot

P38398

Synonyms:

BRCA1; RNF53; Breast cancer type 1 susceptibility protein; RING finger protein 53

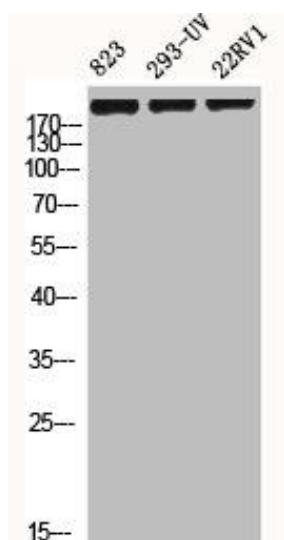
Immunogen:

Synthesized peptide derived from human BRCA1 around the non-phosphorylation site of S1524.

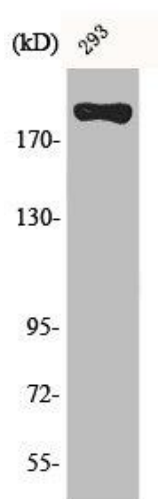
Storage:

Liquid in PBS containing 50% glycerol, 0.5% BSA and 0.02% sodium azide.

Product Images



Western Blot analysis of 823 293-UV 22RV1 cells using BRCA1 Polyclonal Antibody.



Western Blot analysis of 293 cells using BRCA1 Polyclonal Antibody.