

BAX Antibody



PACO06279

Product Information

Size:

50ug

Reactivity:

Human, Mouse, Rat

Source:

Rabbit

Isotype:

IgG

Applications:

ELISA, WB, IHC

Recommended dilutions:

ELISA:1:10000, WB:1:500-1:2000,
IHC:1:100-1:300

Protein Background:

Gene ID:

BAX

Uniprot

Q07812

Synonyms:

BAX; BCL2L4; Apoptosis regulator BAX; Bcl-2-like protein 4; Bcl2-L-4

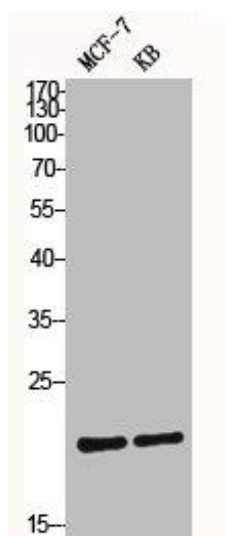
Immunogen:

Synthesized peptide derived from the N-terminal region of human Bax.

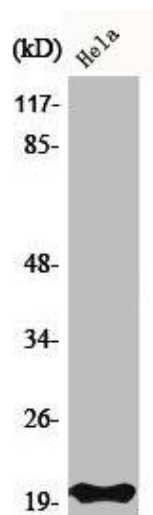
Storage:

Liquid in PBS containing 50% glycerol, 0.5% BSA and 0.02% sodium azide.

Product Images



Western Blot analysis of MCF7 KB cells using Bax Polyclonal Antibody.



Western Blot analysis of HeLa cells using Bax Polyclonal Antibody.