

ATRIP Antibody



PACO06272

Product Information

Size:

50ug

Reactivity:

Human, Mouse, Rat

Source:

Rabbit

Isotype:

IgG

Applications:

ELISA, WB, IHC, IF

Recommended dilutions:

ELISA:1:5000, WB:1:500-1:2000, IHC:1:100-1:300, IF:1:200-1:1000

Protein Background:**Gene ID:**

ATRIP

Uniprot

Q8WXE1

Synonyms:

ATRIP; AGS1; ATR-interacting protein; ATM and Rad3-related-interacting protein

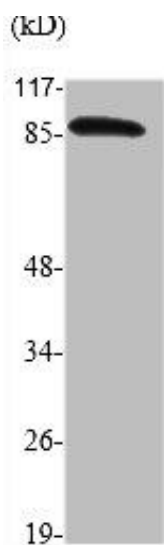
Immunogen:

Synthesized peptide derived from human ATRIP around the non-phosphorylation site of S68.

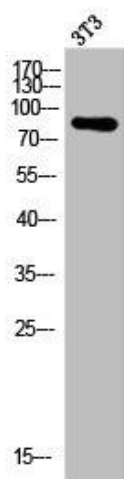
Storage:

Liquid in PBS containing 50% glycerol, 0.5% BSA and 0.02% sodium azide.

Product Images



Western Blot analysis of various cells using ATRIP Polyclonal Antibody.



Western Blot analysis of 3T3 cells using ATRIP Polyclonal Antibody.