

# ARRDC1 Antibody



PACO06265

---

## Product Information

**Size:**

50ug

**Reactivity:**

Human, Mouse, Rat

**Source:**

Rabbit

**Isotype:**

IgG

**Applications:**

ELISA, WB

**Recommended dilutions:**

ELISA:1:20000, WB:1:500-1:2000

**Protein Background:**

**Gene ID:**

ARRDC1

**Uniprot**

Q8N5I2

**Synonyms:**

ARRDC1; Arrestin domain-containing protein 1

**Immunogen:**

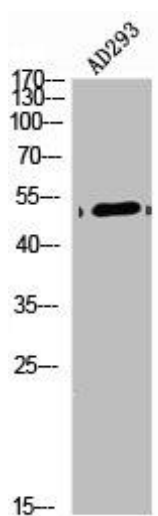
Synthesized peptide derived from the Internal region of human Arrdc1.

**Storage:**

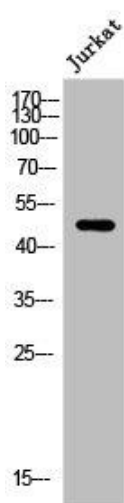
Liquid in PBS containing 50% glycerol, 0.5% BSA and 0.02% sodium azide.

## Product Images

---



Western Blot analysis of AD293 cells using Arrdc1 Polyclonal Antibody.



Western Blot analysis of Jurkat cells using Arrdc1 Polyclonal Antibody.