

ANXA2 Antibody



PACO06250

Product Information

Size:

50ug

Reactivity:

Human, Mouse, Rat

Source:

Rabbit

Isotype:

IgG

Applications:

ELISA, WB, IHC

Recommended dilutions:

ELISA:1:10000, WB:1:500-1:2000,
IHC:1:100-1:300

Protein Background:

Gene ID:

ANXA2

Uniprot

P07355

Synonyms:

ANXA2; ANX2; ANX2L4; CAL1H; LPC2D; Annexin A2; Annexin II; Annexin-2; Calpactin I heavy chain; Calpactin-1 heavy chain; Chromobindin-8; Lipocortin II; Placental anticoagulant protein IV; PAP-IV; Protein I; p36

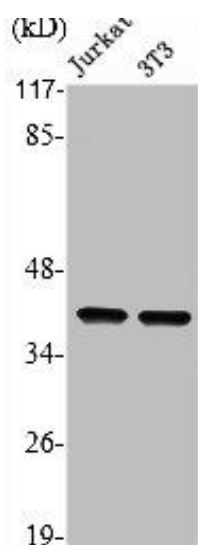
Immunogen:

Synthesized peptide derived from the Internal region of human Annexin II.

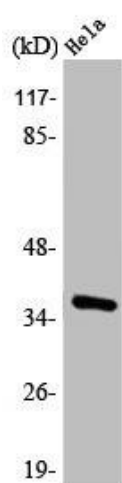
Storage:

Liquid in PBS containing 50% glycerol, 0.5% BSA and 0.02% sodium azide.

Product Images



Western Blot analysis of Jurkat NIH-3T3 cells using Annexin II Polyclonal Antibody.



Western Blot analysis of HeLa cells using Annexin II Polyclonal Antibody.