

ANXA1 Antibody



PACO06249

Product Information

Size:

50ug

Reactivity:

Human, Mouse, Rat

Source:

Rabbit

Isotype:

IgG

Applications:

ELISA, WB, IHC

Recommended dilutions:

ELISA:1:5000, WB:1:500-1:2000, IHC:1:100-1:300, IHC:1:200-1:1000

Protein Background:

Gene ID:

ANXA1

Uniprot

P04083

Synonyms:

ANXA1; ANX1; LPC1; Annexin A1; Annexin I; Annexin-1; Calpactin II; Calpactin-2; Chromobindin-9; Lipocortin I; Phospholipase A2 inhibitory protein; p35

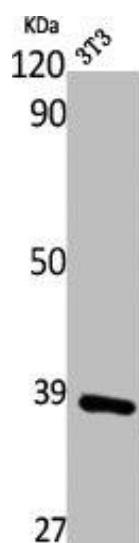
Immunogen:

Synthesized peptide derived from the Internal region of human Annexin I.

Storage:

Liquid in PBS containing 50% glycerol, 0.5% BSA and 0.02% sodium azide.

Product Images



Western Blot analysis of NIH-3T3 cells using Annexin I Polyclonal Antibody.



Western Blot analysis of HeLa cells using Annexin I Polyclonal Antibody.