

# ADAMTS1 Antibody



PACO06233

---

## Product Information

**Size:**

50ug

**Reactivity:**

Human

**Source:**

Rabbit

**Isotype:**

IgG

**Applications:**

ELISA, WB

**Recommended dilutions:**

ELISA:1:5000, WB:1:500-1:2000

**Protein Background:**

**Gene ID:**

ADAMTS1

**Uniprot**

Q9UHI8

**Synonyms:**

ADAMTS1; KIAA1346; METH1; A disintegrin and metalloproteinase with thrombospondin motifs 1; ADAM-TS 1; ADAM-TS1; ADAMTS-1; METH-1

**Immunogen:**

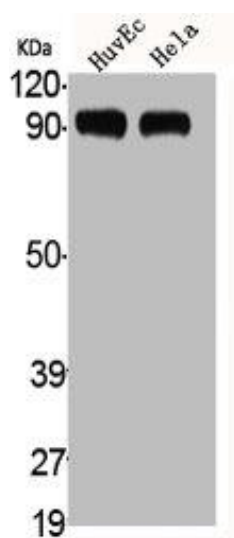
Synthesized peptide derived from the Internal region of human ADAMTS-1.

**Storage:**

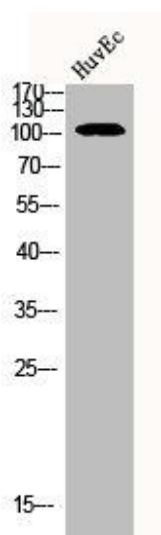
Liquid in PBS containing 50% glycerol, 0.5% BSA and 0.02% sodium azide.

## Product Images

---



Western Blot analysis of HuvEc HELA cells using ADAMTS-1 Polyclonal Antibody.



Western Blot analysis of HUVEC cells using ADAMTS-1 Polyclonal Antibody.