

ACSS1 Antibody



PACO06226

Product Information

Size:

50ug

Reactivity:

Human, Mouse

Source:

Rabbit

Isotype:

IgG

Applications:

ELISA, WB, IHC

Recommended dilutions:

ELISA:1:40000, WB:1:500-1:2000,
IHC:1:100-1:300

Protein Background:**Gene ID:**

ACSS1

Uniprot

Q9NUB1

Synonyms:

ACSS1; ACAS2L; KIAA1846; Acetyl-coenzyme A synthetase 2-like; mitochondrial; Acetate--CoA ligase 2; Acetyl-CoA synthetase 2; AceCS2; Acyl-CoA synthetase short-chain family member 1

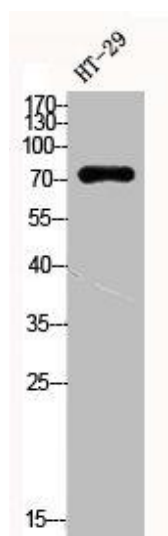
Immunogen:

Synthesized peptide derived from the C-terminal region of human ACSS1.

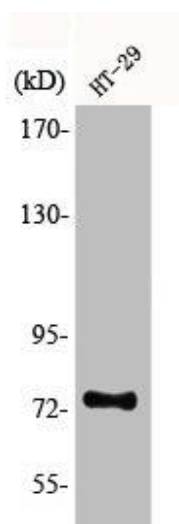
Storage:

Liquid in PBS containing 50% glycerol, 0.5% BSA and 0.02% sodium azide.

Product Images



Western Blot analysis of HT29 cells using ACS1 Polyclonal Antibody.



Western Blot analysis of HT29 cells using ACS1 Polyclonal Antibody.