

# ADIPOQ Antibody



PACO06225

---

## Product Information

**Size:**

50ug

**Reactivity:**

Human, Mouse, Rat

**Source:**

Rabbit

**Isotype:**

IgG

**Applications:**

ELISA, WB

**Recommended dilutions:**

ELISA:1:10000, WB:1:500-1:2000

**Protein Background:****Gene ID:**

ADIPOQ

**Uniprot**

Q15848

**Synonyms:**

ADIPOQ; ACDC; ACRP30; APM1; GBP28; Adiponectin; 30 kDa adipocyte complement-related protein; Adipocyte complement-related 30 kDa protein; ACRP30; Adipocyte; C1q and collagen domain-containing protein; Adipose most abundant gene transcript 1

**Immunogen:**

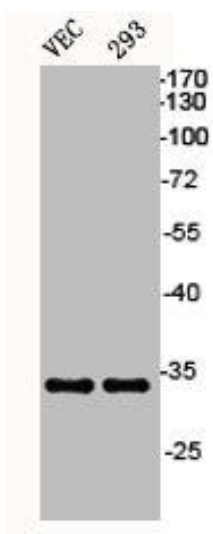
Synthesized peptide derived from the Internal region of human Acrp30.

**Storage:**

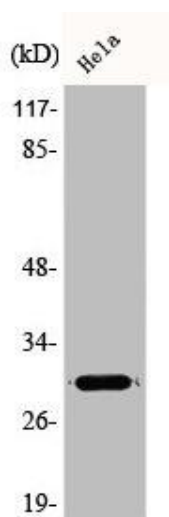
Liquid in PBS containing 50% glycerol, 0.5% BSA and 0.02% sodium azide.

## Product Images

---



Western Blot analysis of VEC 293 cells using Acrp30 Polyclonal Antibody.



Western Blot analysis of HeLa cells using Acrp30 Polyclonal Antibody.