

ABCG2 Antibody



PACO06219

Product Information

Size:

50ug

Reactivity:

Human

Source:

Rabbit

Isotype:

IgG

Applications:

ELISA, WB, IHC

Recommended dilutions:

ELISA:1:10000, WB:1:500-1:2000,
IHC:1:100-1:300

Protein Background:

Gene ID:

ABCG2

Uniprot

Q9UNQ0

Synonyms:

ABCG2; ABCP; BCRP; BCRP1; MXR; ATP-binding cassette sub-family G member 2; Breast cancer resistance protein; CDw338; Mitoxantrone resistance-associated protein; Placenta-specific ATP-binding cassette transporter; CD antigen CD338

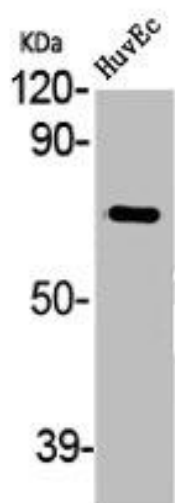
Immunogen:

Synthesized peptide derived from the Internal region of human ABCG2.

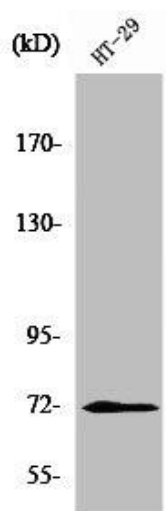
Storage:

Liquid in PBS containing 50% glycerol, 0.5% BSA and 0.02% sodium azide.

Product Images



Western Blot analysis of HuvEc cells using ABCG2 Polyclonal Antibody.



Western Blot analysis of HT29 cells using ABCG2 Polyclonal Antibody.