

PACO06214

Product Information

Size:

50ug

Reactivity:

Human

Source:

Rabbit

Isotype:

IgG

Applications:

ELISA, WB

Recommended dilutions:

ELISA:1:10000, WB:1:500-1:2000

Protein Background:

Gene ID:

AASS

Uniprot

Q9UDR5

Synonyms:

AASS; alpha-aminoadipic semialdehyde synthase; mitochondrial; LKR/SDH

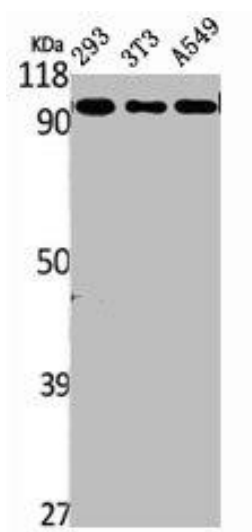
Immunogen:

Synthesized peptide derived from the Internal region of human AASS.

Storage:

Liquid in PBS containing 50% glycerol, 0.5% BSA and 0.02% sodium azide.

Product Images



Western Blot analysis of 293 NIH-3T3 A549 cells using AASS Polyclonal Antibody.



Western Blot analysis of HeLa cells using AASS Polyclonal Antibody.