

# ADCY5/ADCY6 Antibody



PACO06212

---

## Product Information

**Size:**

50ug

**Reactivity:**

Human, Mouse, Rat

**Source:**

Rabbit

**Isotype:**

IgG

**Applications:**

ELISA, WB, IHC, IF

**Recommended dilutions:**

ELISA:1:10000, WB:1:500-1:2000,  
IHC:1:100-1:300, IF:1:200-1:1000

**Protein Background:**

**Gene ID:**

ADCY5/ADCY6

**Uniprot**

O95622/O43306

**Synonyms:**

ADCY5; Adenylate cyclase type 5; ATP pyrophosphate-lyase 5; Adenylate cyclase type V;  
Adenylyl cyclase 5; ADCY6; KIAA0422; Adenylate cyclase type 6; ATP pyrophosphate-  
lyase 6; Adenylate cyclase type VI; Adenylyl cyclase 6; Ca(2+)-inhibitabl

**Immunogen:**

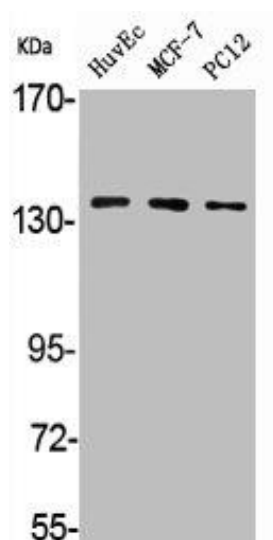
Synthesized peptide derived from the C-terminal region of human A Cyclase V/VI.

**Storage:**

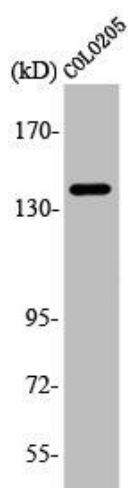
Liquid in PBS containing 50% glycerol, 0.5% BSA and 0.02% sodium azide.

## Product Images

---



Western Blot analysis of HuvEc MCF7 PC12 cells using A Cyclase V/VI Polyclonal Antibody.



Western Blot analysis of COLO205 cells using A Cyclase V/VI Polyclonal Antibody.