

# EPB41L2 Antibody



PACO06209

---

## Product Information

**Size:**

50ug

**Reactivity:**

Human

**Source:**

Rabbit

**Isotype:**

IgG

**Applications:**

ELISA, WB, IHC

**Recommended dilutions:**

ELISA:1:40000, WB:1:500-1:2000,  
IHC:1:100-1:300

**Protein Background:****Gene ID:**

EPB41L2

**Uniprot**

O43491

**Synonyms:**

EPB41L2; Band 4.1-like protein 2; Generally expressed protein 4.1; 4.1G

**Immunogen:**

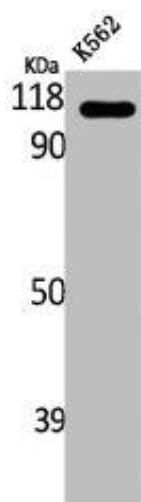
Synthesized peptide derived from the Internal region of human 4.1G.

**Storage:**

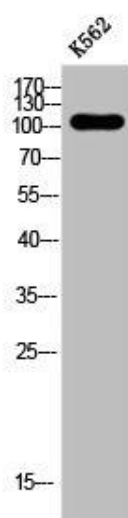
Liquid in PBS containing 50% glycerol, 0.5% BSA and 0.02% sodium azide.

## Product Images

---



Western Blot analysis of K562 cells using 4.1G Polyclonal Antibody.



Western Blot analysis of K562 cells using 4.1G Polyclonal Antibody.