

# HSD11B1 Antibody



PACO06205

---

## Product Information

**Size:**

50ug

**Reactivity:**

Human, Mouse, Rat

**Source:**

Rabbit

**Isotype:**

IgG

**Applications:**

ELISA, WB, IHC

**Recommended dilutions:**

ELISA:1:40000, WB:1:500-1:2000,  
IHC:1:100-1:300

**Protein Background:**

**Gene ID:**

HSD11B1

**Uniprot**

P28845

**Synonyms:**

HSD11B1; HSD11; HSD11L; Corticosteroid 11-beta-dehydrogenase isozyme 1; 11-beta-hydroxysteroid dehydrogenase 1; 11-DH; 11-beta-HSD1

**Immunogen:**

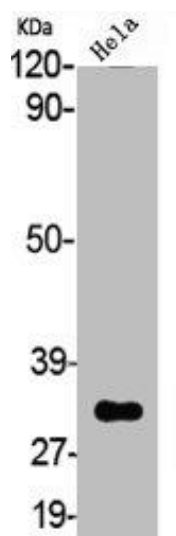
Synthesized peptide derived from the N-terminal region of human 11 &beta; -HSD1.

**Storage:**

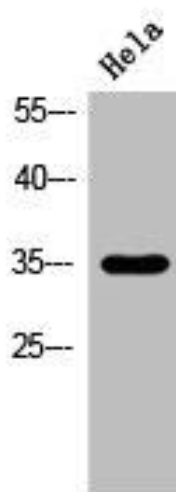
Liquid in PBS containing 50% glycerol, 0.5% BSA and 0.02% sodium azide.

## Product Images

---



Western Blot analysis of HELA cells using 11 beta -HSD1 Polyclonal Antibody.



Western Blot analysis of Hela cells using 11 beta -HSD1 Polyclonal Antibody.