

Phospho-PRKCD (S645) Antibody



PACO06192

Product Information

Size:

50ug

Reactivity:

Human, Monkey

Source:

Rabbit

Isotype:

IgG

Applications:

ELISA, WB, IHC

Recommended dilutions:

ELISA:1:10000, WB:1:500-1:2000,
IHC:1:100-1:300

Protein Background:**Gene ID:**

PRKCD

Uniprot

Q05655

Synonyms:

PRKCD; Protein kinase C delta type; Tyrosine-protein kinase PRKCD; nPKC-delta

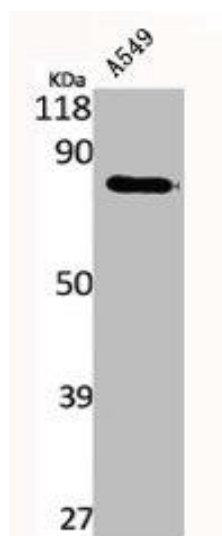
Immunogen:

Synthesized peptide derived from human PKC delta around the phosphorylation site of S645.

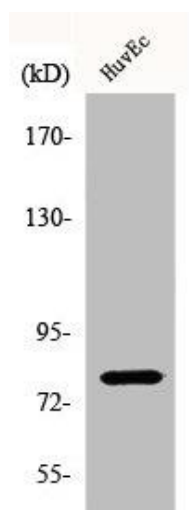
Storage:

Liquid in PBS containing 50% glycerol, 0.5% BSA and 0.02% sodium azide.

Product Images



Western Blot analysis of A549 cells using Phospho-PKC delta (S645) Polyclonal Antibody.



Western Blot analysis of HuvEc cells using Phospho-PKC delta (S645) Polyclonal Antibody.