

# Phospho-PFKFB2 (S483) Antibody



PACO06183

---

## Product Information

**Size:**

50ug

**Reactivity:**

Human, Mouse, Rat

**Source:**

Rabbit

**Isotype:**

IgG

**Applications:**

ELISA, WB, IHC

**Recommended dilutions:**

ELISA:1:40000, WB:1:500-1:2000,  
IHC:1:100-1:300

**Protein Background:****Gene ID:**

PFKFB2

**Uniprot**

O60825

**Synonyms:**

PFKFB2; 6-phosphofructo-2-kinase/fructose-2; 6-bisphosphatase 2; 6PF-2-K/Fru-2,6-P2ase 2; PFK/FBPase 2; 6PF-2-K/Fru-2,6-P2ase heart-type isozyme

**Immunogen:**

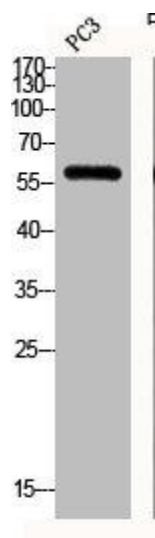
Synthesized peptide derived from human PFK-2 car around the phosphorylation site of S483.

**Storage:**

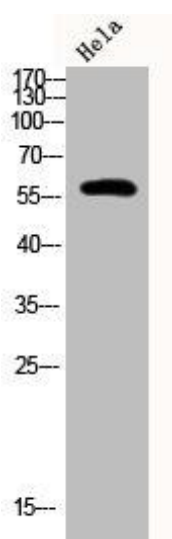
Liquid in PBS containing 50% glycerol, 0.5% BSA and 0.02% sodium azide.

## Product Images

---



Western Blot analysis of PC3 cells using Phospho-PFK-2 car (S483) Polyclonal Antibody.



Western Blot analysis of HeLa cells using Phospho-PFK-2 car (S483) Polyclonal Antibody.