

Phospho-OPRK1 (S369) Antibody



PACO06161

Product Information

Size:

50ug

Reactivity:

Mouse, Rat

Source:

Rabbit

Isotype:

IgG

Applications:

ELISA, WB, IHC

Recommended dilutions:

ELISA:1:10000, WB:1:500-1:2000,
IHC:1:100-1:300

Protein Background:**Gene ID:**

OPRK1

Uniprot

P41145

Synonyms:

OPRK1; OPRK; κ -type opioid receptor; K-OR-1; KOR-1

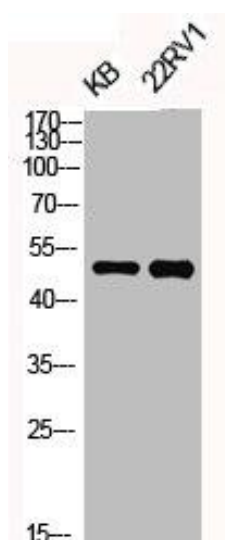
Immunogen:

Synthesized peptide derived from human KOR-1 around the phosphorylation site of S369.

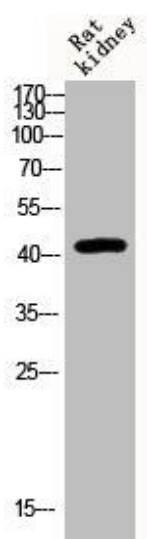
Storage:

Liquid in PBS containing 50% glycerol, 0.5% BSA and 0.02% sodium azide.

Product Images



Western Blot analysis of KB 22RV1 cells using Phospho-KOR-1 (S369) Polyclonal Antibody.



Western Blot analysis of Rat-kidney cells using Phospho-KOR-1 (S369) Polyclonal Antibody.