

Phospho-RELA (S536) Antibody



PACO06144

Product Information

Size:

50ug

Reactivity:

Human, Mouse, Rat, Monkey

Source:

Rabbit

Isotype:

IgG

Applications:

ELISA, WB, IHC, IP

Recommended dilutions:

ELISA:1:10000, WB:1:500-1:2000,
IHC:1:100-1:300, IP:2-5ug

Protein Background:**Gene ID:**

RELA

Uniprot

Q04206

Synonyms:

RELA; NFKB3; Transcription factor p65; Nuclear factor NF- κ B; -B p65 subunit; Nuclear factor of κ B; light polypeptide gene enhancer in B-cells 3

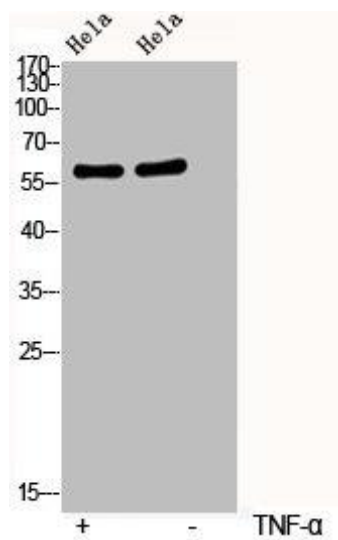
Immunogen:

Synthesized peptide derived from human NF κ B; B-p65 around the phosphorylation site of S536.

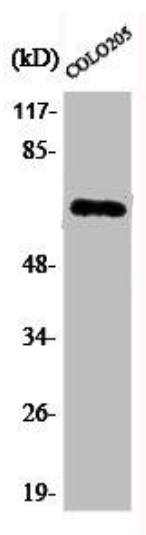
Storage:

Liquid in PBS containing 50% glycerol, 0.5% BSA and 0.02% sodium azide.

Product Images



Western Blot analysis of HELA cells using Phospho-NF kappa B-p65 (S536) Polyclonal Antibody.



Western Blot analysis of K562 cells using Phospho-NF kappa B-p65 (S536) Polyclonal Antibody.