

# Phospho-CAV1 (Y14) Antibody



PACO06103

---

## Product Information

**Size:**

50ug

**Reactivity:**

Human, Mouse, Rat

**Source:**

Rabbit

**Isotype:**

IgG

**Applications:**

ELISA, WB

**Recommended dilutions:**

ELISA:1:20000, WB:1:500-1:2000

**Protein Background:**

**Gene ID:**

CAV1

**Uniprot**

Q03135

**Synonyms:**

CAV1; CAV; Caveolin-1

**Immunogen:**

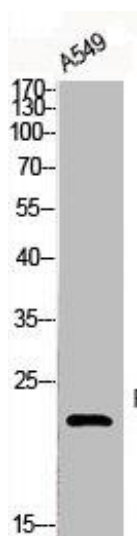
Synthesized peptide derived from human Caveolin-1 around the phosphorylation site of Y14.

**Storage:**

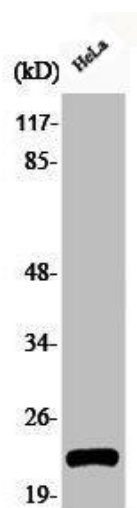
Liquid in PBS containing 50% glycerol, 0.5% BSA and 0.02% sodium azide.

## Product Images

---



Western Blot analysis of A549 cells using Phospho-Caveolin-1 (Y14) Polyclonal Antibody.



Western Blot analysis of HeLa cells using Phospho-Caveolin-1 (Y14) Polyclonal Antibody.